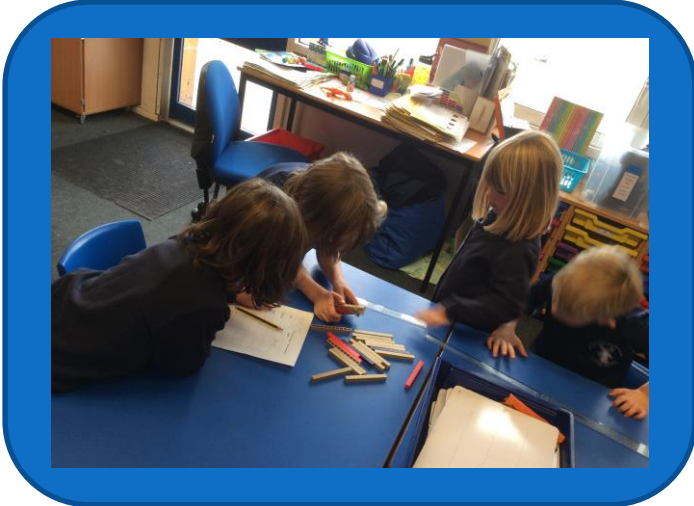
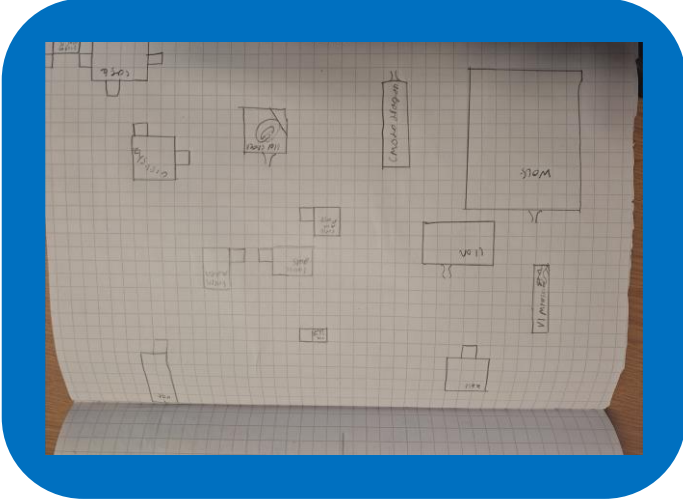


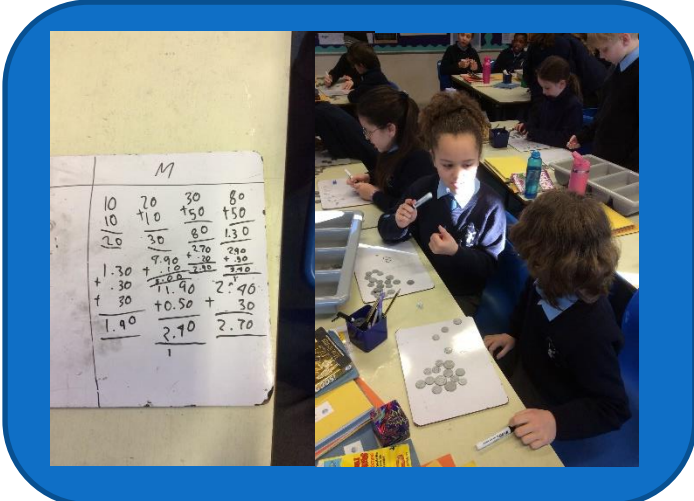
# Maths in the World of Work January/February 2025



In Year 2 the children made links to their Geography learning and were inspired by the work of pilots. They used world maps and measured the distances between different major cities across the world. They used the dienes blocks to help with their calculations.



In Year 4 the children became engineers and designed new zoos. They made links to perimeter and area learning and had to fit certain criteria when designing their enclosures and walkways.



In Year 5 the children worked in the zoo. They focussed on the use of budgeting to plan different day trips for families. They used the coins and developed their confidence with adding and subtracting numbers with decimals.



# St Mary's C of E Primary School, Woodbridge

